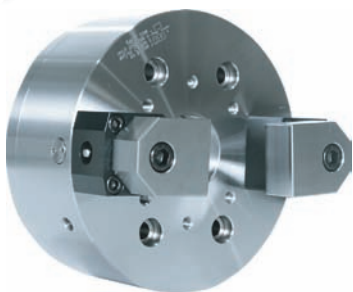


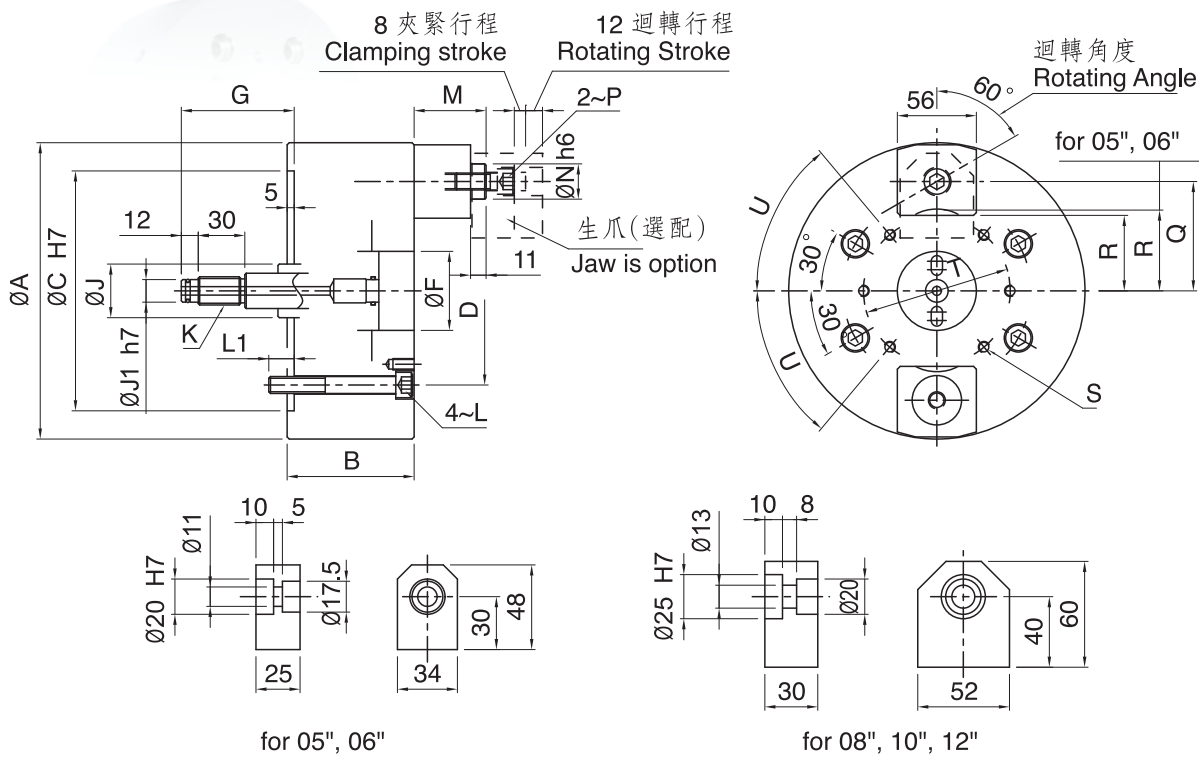
> 2J SERIES

二爪中實型指形動力夾頭

FINGER POWER CHUCK



- ◎ 採工件端面夾持，防止工件夾持變形，適合薄壁工件加工。
- ◎ 夾持補償機構，可夾持不規則斷面之工件。
- ◎ 夾頭中心可裝設工件密著確認裝置。
- ◎ Prevent deformation of workpiece for gripping the terminal surface, suitable for thin workpiece process.
- ◎ The compensating mechanism of gripping that can grasp the workpieces of the irregular surface.
- ◎ Additional check device able to install in the center of chuck.



規格 Spec 型號 Model	楔心行程 Plunger stroke (mm)	爪行程 Jaw stroke (mm)	夾持直徑 chucking Dia.(mm)		容許油壓缸推力 Max.D.B pull KN(kgf)	最大夾持力 Max clamping force (kgf)	最高回轉速 max r.p.m	慣性矩 kg·m ²	重量 (kg) Weight	適用回轉缸 Matching cyl	最大使用壓力 Max.pressure Mpa (kgf/cm ²)
			最大Max	最小Min							
2J-05	12	8	53	25	5.0(510)	4.0(408)	4000	0.015	9.0	S-100R	0.7(7)
2J-06			79	55	6.0(612)	5.0(510)		0.035	9.8		0.8(8)
2J-08			106	75	12.0(1224)	11.0(1122)	3500	0.12	20.3	or SNK-100	1.7(17)
2J-10			150	119				0.28	30.7		
2J-12			200	169				0.52	41.2		

寸法 Size 型號 Model	A	B	C	D	F	G		J	J1	K	L	L1	M		N	P	Q	R	S	T	U
						max	min						max	min							
2J-05	135	86	110	82.6	40	75	55	25	10	M12X1.75	M10	15	56	36	20	M10	42.5	27	4-M6	50	30°
2J-06	165		140	104.8	45	75	55	28	14	M16X2			57.5	40			4-M8	64			
2J-08	210	90	170	133.4	56	80	60	38	16	M20X2.5	M16	24	71	51	25	M12	77.5	53.5	6-M8	104	190
2J-10	254	95	220	171.4		75	55										99.5	75.5		140	
2J-12	304	220	171.4	75		55	124.5										100.5	190			

* 保留技術更改的權利，恕不另行通知 Subject to technology changes without prior information
 * 非標需求可訂做 Non-standard requirements can be made